

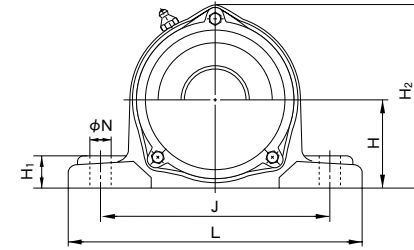
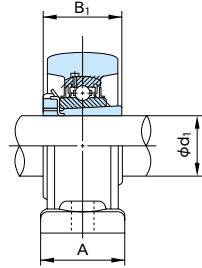
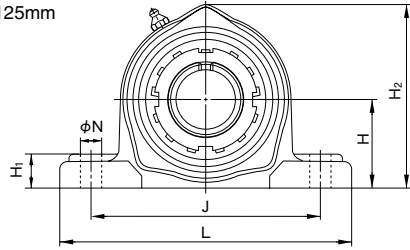
### Cast Steel Pillow Block Units

#### UKPK+H type

With adapter assembly

Tapered bore

Shaft dia. : 45 ~ 125mm



1N=0.102kgf

With cast covers

Shaft dia. d <sub>1</sub> (mm)	Unit No.	Boundary dimensions (mm)											Bolt size	Bearings			Housing No.	Unit No. with cast covers		Mass of Unit (kg)	
		H	L	A	J	N	H <sub>1</sub>	H <sub>2</sub>	B <sub>1</sub>	A <sub>5</sub>	A <sub>7</sub>	No.		Basic load rating (N)		Both covers with rubber seal (one side end cover)		standard	with cast cover		
														Cr	Cor						
45	<i>UKPK210+H2310</i>	57.2	200	55	159	19	22	120	55	98	15	M16	<i>UK210+H2310</i>	35500	23200	PK210	<i>CUKPK210C(CE)+H2310</i>	3.6	4.6		
50	<i>UKPK211+H2311</i>	63.5	216	55	171	19	22	133	59	100	15	M16	<i>UK211+H2311</i>	43000	29400	PK211	<i>CUKPK211C(CE)+H2311</i>	4.7	5.9		
55	<i>UKPK212+H2312</i>	69.8	233	65	184	19	25	145	62	114	20	M16	<i>UK212+H2312</i>	52500	36100	PK212	<i>CUKPK212C(CE)+H2312</i>	5.7	6.9		
60	<i>UKPK213+H2313</i>	76.2	258	70	203	24	27	156	65	118	20	M20	<i>UK213+H2313</i>	57500	40000	PK213	<i>CUKPK213C(CE)+H2313</i>	6.8	8.4		
	<i>UKPK313+H2313</i>	90	326	85	260	24	36	188	65	140	24	M20	<i>UK313+H2313</i>	92500	59700	PK313	<i>CUKPK313C(CE)+H2313</i>	12.1	14.6		
65	<i>UKPK215+H2315</i>	82.6	272	74	217	24	28	167	73	136	26	M20	<i>UK215+H2315</i>	66000	48200	PK215	<i>CUKPK215C(CE)+H2315</i>	8.5	10.7		
	<i>UKPK315+H2315</i>	100	366	90	290	26	40	208	73	150	25	M22	<i>UK315+H2315</i>	114000	76900	PK315	<i>CUKPK315C(CE)+H2315</i>	17.2	20.4		
70	<i>UKPK216+H2316</i>	88.9	288	75	232	24	30	188	78	146	26	M20	<i>UK216+H2316</i>	72500	53000	PK216	<i>CUKPK216C(CE)+H2316</i>	10.9	13.8		
	<i>UKPK316+H2316</i>	106	386	100	300	26	45	219	78	154	23	M22	<i>UK316+H2316</i>	123000	86400	PK316	<i>CUKPK316C(CE)+H2316</i>	20.0	23.7		
75	<i>UKPK217+H2317</i>	95.2	303	80	247	24	32	199	82	150	26	M20	<i>UK217+H2317</i>	83500	61800	PK217	<i>CUKPK217C(CE)+H2317</i>	12.8	16.1		
	<i>UKPK317+H2317</i>	112	407	105	320	32	45	234	82	164	26	M27	<i>UK317+H2317</i>	132000	96500	PK317	<i>CUKPK317C(CE)+H2317</i>	22.9	27.4		
80	<i>UKPK218+H2318</i>	101.6	322	85	262	26	34	211	86	164	31	M22	<i>UK218+H2318</i>	95500	71400	PK218	<i>CUKPK218C(CE)+H2318</i>	15.5	19.4		
	<i>UKPK318+H2318</i>	118	417	105	330	32	50	245	86	168	26	M27	<i>UK318+H2318</i>	143000	107200	PK318	<i>CUKPK318C(CE)+H2318</i>	26.1	31.2		
85	<i>UKPK319+H2319</i>	125	455	115	360	35	50	257	90	180	30	M30	<i>UK319+H2319</i>	153000	118400	PK319	<i>CUKPK319C(CE)+H2319</i>	33.1	38.7		
90	<i>UKPK320+H2320</i>	140	475	115	380	35	55	282	97	190	31	M30	<i>UK320+H2320</i>	173000	140400	PK320	<i>CUKPK320C(CE)+H2320</i>	40.2	46.7		
100	<i>UKPK322+H2322</i>	150	505	130	400	38	60	305	105	210	36	M33	<i>UK322+H2322</i>	205000	178800	PK322	<i>CUKPK322C(CE)+H2322</i>	47.9	56.5		
110	<i>UKPK324+H2324</i>	160	555	130	450	38	70	328	112	220	35	M33	<i>UK324+H2324</i>	207000	184800	PK324	<i>CUKPK324C(CE)+H2324</i>	63.3	75.1		
115	<i>UKPK326+H2326</i>	180	585	130	480	38	80	358	121	230	36	M33	<i>UK326+H2326</i>	229000	214300	PK326	<i>CUKPK326C(CE)+H2326</i>	81.9	95.3		
125	<i>UKPK328+H2328</i>	200	605	130	500	38	80	388	131	240	37	M33	<i>UK328+H2328</i>	255000	246000	PK328	<i>CUKPK328C(CE)+H2328</i>	96.2	111		

Remarks (1): Please contact NACHI for units number appeared in italic.

Remarks (2): Grease nipple :

1/4-28UNF for bore number 13 and under  
PF1/8 for bore number 14 and over

Remarks (3): Examples of number of units with covers:

With cast cover { Covers with rubber seal on both sides : CUKPK210C+H2310  
An end cover and a cover with rubber seal : CUKPK210CE+H2310